

Princeton



Princeton

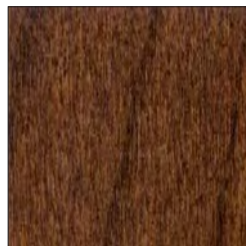
Princeton is Leda reflecting on the heart and soul of the company's design, value and craftsmanship.

Clean, simplistic, back-to-basics design updated to meet today's most distinguished consumer.

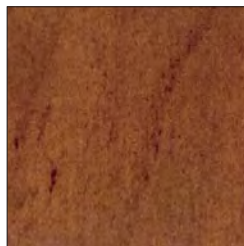
Domestically produced and value-priced, this cherrywood collection is sure to be a favorite among consumers who recall Leda's passion for creating quality furniture.



Leda Furniture founders: Lino and Leda Confalone



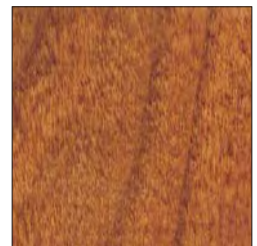
Amaretto



Chestnut Cherry



Merlot



Scotch Mist

Princeton's Four Finish Selections

Available in four finish selections to allow you to opportunity to best select a favorite finish that will work best in your home environment.



give yourself the luxury furniture you deserve



shown in Chestnut Cherry finish

#43-300 TV Credenza

Suitable for most all television sizes
 Center glass doors encase pull-out trays
 Adjustable shelf behind each wooden door
 Dimensions: 72w 19d 27h in.
 183w 48d 69h cm.

#43-310 Credenza Deck

Adjustable display shelves on each side
 Dimensions: 75w 18d 48h in.
 191w 46d 122h cm.



#43-301 TV Credenza

Suitable for most all television sizes.

Open center area features an adjustable shelf

Adjustable shelf behind each wooden door

Dimensions: 60w 19d 27h in.
152w 48d 69h cm.

shown left in Scotch Mist finish

shown below in Merlot finish





shown in Scotch Mist finish

#43-121 48" Round Pedestal Table

1 x 18" (45cm.) extension leaves
 Total opening: 66" (165cm.)
 Dimensions: 48dia. 30h in.
 122dia. 76h cm.

#43-150 2-Door Cabinet

Felt-lined cutlery drawer
 Adjustable wood shelf
 Dimensions: 39w 20d 32h in.
 99w 51d 81h cm.

#43-130 Side Chair

Fabric shown: Regime 802 Hazelnut
 Dimensions: 20w 18d 40h in.
 51w 46d 102h cm.

#43-140 Arm Chair

Fabric shown: Regime 802 Hazelnut
 Dimensions: 26w 18d 40h in.
 66w 46d 102h cm.





shown in Chestnut Cherry finish

#43-100 Buffet

Center drawer is a felt-lined cutlery drawer

Adjustable wood shelves

Dimensions: 72w 19d 32h in.
183w 48d 81h cm.

#43-110 Hutch

Beveled glass doors and sides

Mirrored back

Adjustable glass shelves w/ plate groove

4-level touch-hinge halogen lighting

Dimensions: 75w 18d 49h in.
191w 46d 124h cm.

#43-120 Rectangular Table

2 x 18' (45cm.) extension leaves

Total opening: 104" (260cm.)

Dimensions: 68L 44w 30h in.
173L 112w 76h cm.

#43-131 Capri Side Chair

Fabric shown: Reign 802 Hazelnut

Dimensions: 20w 18d 46h in.
51w 46d 117h cm.

#43-141 Capri Arm Chair

Fabric shown: Reign 802 Hazelnut

Dimensions: 24w 18d 46h in.
61w 46d 117h cm.

shown below:

#43-132 Twin-back Side Chair

Dimensions: 20w 18d 46h in.
51w 46d 117h cm.

#43-142 Twin-back Arm Chair

Dimensions: 24w 18d 46h in.
61w 46d 117h cm.







shown in Chestnut Cherry finish

#43-120 Rectangular Table

2 x 18" (45cm.) extension leaves
 Total opening: 104" (260cm.)
 Dimensions: 68L 44w 30h in.
 173L 112w 76h cm.

#43-130 Side Chair

Fabric shown: Reign 802 Hazelnut
 Dimensions: 20w 18d 40h in.
 51w 46d 102h cm.

#43-140 Arm Chair

Fabric shown: Reign 802 Hazelnut
 Dimensions: 26w 18d 40h in.
 66w 46d 102h cm.

#43-100 Buffet

Center drawer is a felt-lined cutlery drawer
 Adjustable wood shelves
 Dimensions: 72w 19d 32h in.
 183w 48d 81h cm.

#43-110 Hutch

Beveled glass doors and sides
 Mirrored back
 Adjustable glass shelves w/ plate groove
 4-level touch-hinge halogen lighting
 Dimensions: 75w 18d 49h in.
 191w 46d 124h cm.



#43-145 Cameo Arm Chair

Walnut veneer exterior back
Fabric shown: Regime 802 Hazelnut

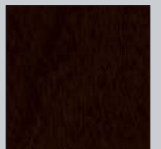
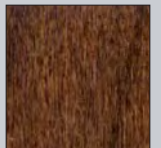
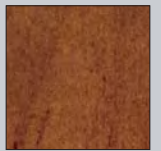
Dimensions: 23w 26d 42h in.
58w 66d 107h cm.

#43-135 Cameo Side Chair

Walnut veneer exterior back
Fabric shown: Regime 802 Hazelnut

Dimensions: 21w 26d 42h in.
53w 66d 107h cm.

Princeton



#43-124 Leg Table

2 x 18" (45cm.) extension leaves
Total opening: 104" (260cm.)

Dimensions 68L 44w 30h in.
173L 112w 76h cm.

#43-100 Buffet

Center drawer is a felt-lined cutlery drawer
Adjustable wood shelves

Dimensions: 72w 19d 32h in.
183w 48d 81h cm.





#43-201 Double Dresser

8 drawers, including a top drawer jewelry insert

Dimensions: 60w 19d 38h in.
152w 48d 97h cm.

#43-210 Beveled Mirror

Dimensions: 36w 41h in.
91w 104h cm.

#43-221 Drawer Chest

5 drawer cabinet

Dimensions: 41w 21d 55h in.
104w 53d 140h cm.

#43-400 End Table

Adjustable wood shelf

Dimensions: 24w 18d 32h in.
61w 46d 74h cm.

#43-240 Queen Bed

Dimensions: 67w 84d 60h in.
170w 219d 152h cm.

also available:

#43-250 King Bed

Dimensions: 85w 84d 60h in.
216w 219d 152h cm.

shown in Chestnut Cherry finish



#43-200 Triple Dresser

9 drawers, including a jewelry tray insert in top drawer
Adjustable shelf behind center door

Dimensions: 72w 19d 38h in.
183w 48d 97h cm.

#43-210 Beveled Mirror

Dimensions: 36w 41h in.
91w 104h cm.



All dressers include a stylish tray to store and protect jewelry and other valuables.

Princeton



#43-230 Night Table

3 drawer cabinet

Dimensions: 30w 18d 29h in.
76w 46d 74h cm.

shown in Chestnut Cherry finish

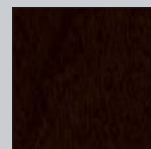
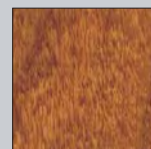
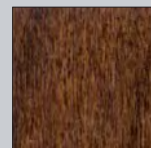
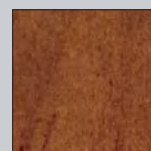


#43-221 Drawer Chest

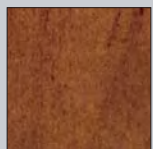
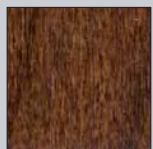
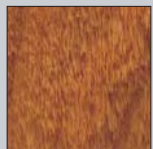
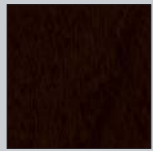
5 drawer cabinet

Dimensions: 41w 21d 55h in.
104w 53d 140h cm.

shown in Chestnut Cherry finish



Princeton



#43-150 2-Door Cabinet

Felt-lined cutlery drawer
Adjustable wood shelf

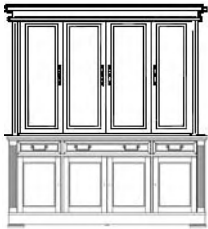
Dimensions: 39w 20d 32h in.
99w 51d 81h cm.

top: shown in Merlot finish

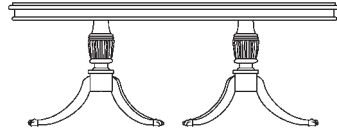
bottom: shown in Scotch Mist finish

This versatile unit is ideal for an entry room,
dining room, living room, guest room
....or any setting you can imagine.

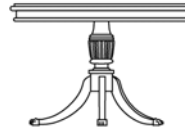
Visual Index



43110 4-Door Hutch
75w 18d 49h in. 191w 46d 124h cm.
4 beveled glass doors & mirrored back
2 x 8mm adjustable glass shelves
multi-setting touch-hinge halogen lighting
43100 4-Door Buffet
72w 19d 32h in. 183w 48d 81h cm.
cutlery tray center drawer
See page 4, 9



43120 Rectangular Table
68w 44d 30h in. 173w 112d 76h cm.
2 - 18in. (45cm.) leaves
total opening = 104in. (260cm.)
See page 5, 7



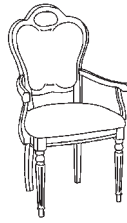
43121 48" Round Table
48w 48d 30h in. 122w 122d 76h cm.
1 - 18in. (45cm.) leaf
total opening = 66in. (165cm.)
See page 3



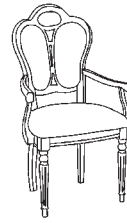
43124 Leg Table
68w 44d 30h in. 173w 112d 76h cm.
2 - 18in. (45cm.) leaves
total opening = 104in. (260cm.)
See page 9



43130 Side Chair
20w 18d 40h in. 51w 46d 102h cm.
43140 Arm Chair
26w 18d 40h in. 66w 46d 102h cm.
See page 7



43131 Capri Side Chair
20w 18d 46h in. 51w 46d 117h cm.
43141 Capri Arm Chair
24w 18d 46h in. 61w 46d 117h cm.
See page 5



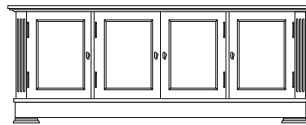
43132 Twin-Back Side Chair
20w 18d 46h in. 51w 46d 117h cm.
43142 Twin-Back Arm Chair
24w 18d 46h in. 61w 46d 117h cm.
See page 5



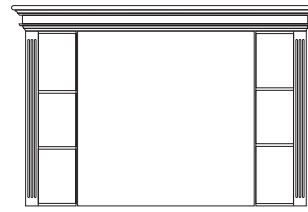
43135 Cameo Side Chair
21w 26d 42h in. 53w 66d 107h cm.
43145 Cameo Arm Chair
23w 26d 42h in. 58w 66d 107h cm.
See page 9



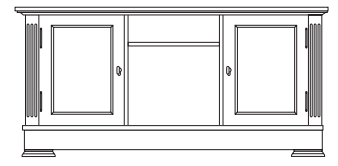
43150 Versatile Cabinet
39w 20d 32h in. 99w 51d 81h cm.
felt-lined top drawer
adjustable shelf behind double doors
See page 3, 14



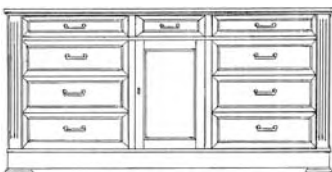
43300 TV Credenza
72w 19d 27h in. 183w 48d 69h cm.
adjustable shelf behind each wood door
center glass double doors encase a pull-out tray
See page 1



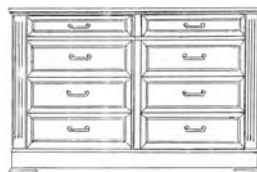
43310 TV Credenza Deck
75w 18d 48h in. 191w 46d 122h cm.
optional unit for the 43300 TV Credenza
3 display shelves on each side
See page 1



43301 TV Credenza
60w 19d 27h in. 152w 48d 69h cm.
adjustable shelf behind each wood door
open center opening with an adjustable shelf
See page 2



43200 Triple Dresser
72w 19d 38h in. 183w 48d 97h cm.
9 drawers plus center door and adjustable shelf
jewelry tray insert
See page 12



43201 Double Dresser
60w 19d 38h in. 152w 48d 97h cm.
8 drawer cabinet
jewelry tray insert
See page 10



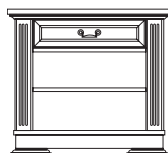
43210 Beveled Mirror
36w 41h in. 91w 104h cm.
beveled mirror
See page 10, 12



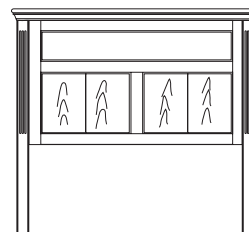
43221 Drawer Chest
41w 21d 55h in. 104w 53d 140h cm.
5 drawer cabinet
See page 10, 13



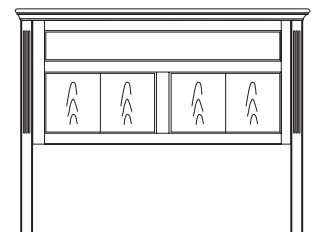
43230 Night Table
30w 18d 29h in. 76w 46d 74h cm.
3 drawer cabinet
See page 13



43400 End Table
24w 18d 32h in. 61w 46d 74h cm.
open front area with an adjustable shelf
1 drawer
See page 11



43240 Queen Bed
67w 84d 60h 170w 219d 152h cm.
takes mattress and box spring
optional slat suspension system available
See page 11



43250 King Bed
85w 84d 60h 216w 219d 152h cm.
takes mattress and box spring
optional slat suspension system available
See page 11

Princeton's Four Finish Selections

Princeton is available in four finish selections to allow you to opportunity to best select a favorite finish that will work best in your home environment.

Wood Finish:

Leda Furniture maintains strict finishing requirements. Talented craftsmen take extreme pride in the art of finishing, including staining, padding, rubbing and highlighting - all by hand. We are very careful to formulate and apply each finish to exacting standards. However color variations will occur because natural woods vary in their reaction to finishing materials due to age, grain pattern and raw wood tone. The finish shown is reproduced as accurately as printing techniques permit.



Chestnut Cherry finish



Scotch Mist finish



Amaretto finish



Merlot finish

Quality Durability Longevity

Leda Furniture Ltd. prides itself in manufacturing high quality furniture. All materials used to craft our fine furniture are carefully selected to ensure that each Leda heirloom will last for generations.

Along with quality materials, Leda also incorporates crafting methods and construction features that enhance our furniture design. This attention to detail adds quality and durability to the furniture, as well as convenience and adaptability for the consumer's needs.



Adjustable shelves:
Allow for easy and flexible storage space and reorganization.



Dovetail Joinery:
Wedge-shaped projections on the drawer panels interlock with alternating grooves to produce a tight and secure joint.



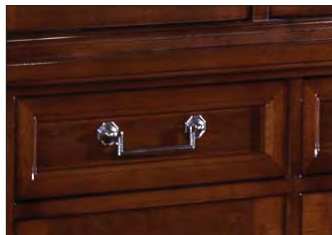
Drawer Runners:
Teflon strips installed in the drawer opening ensuring a smooth and even slide for the drawer. These strips also add to the cabinet's sturdiness.



Dustproofing:
There are wooden separators installed between each drawer to prevent dust from entering protecting belongings stored within. These separators also add to the cabinet's sturdiness.



Drawer Guides:
Wooden glides: Installed underneath each drawer designed to slide on top of the drawer runner to provide quiet and smooth drawer operation.



Solid Metal Hardware:
Leda Furniture casegoods feature decorative solid metal or brass hardware, aesthetically pleasing to touch and feel, with lasting durability.

Statement of Quality

Leda has manufactured furniture since the late 1960's, utilizing state of the art technology, skills and craftsmanship. Each piece is made to exacting standards and of the highest quality materials available. All pieces are inspected at numerous intervals during the manufacturing process, including a final inspection prior to packaging.

Despite our best efforts some natural imperfections may occur once the furniture has had time to settle after the manufacturing process. These situations may require repairs and/or part replacements

Leda Furniture selects glass and mirrors of the highest quality to complement the furniture. However the very best glass and mirrors may have certain characteristics that are inherent in the glass making process, these include faint scratches, air bubbles and pitted areas. These minor allowable marks do not detract from the beauty and integrity of the product.

Leda Furniture Ltd stands behind its product in regard to manufacturing related issues (materials, workmanship) for a period of one year from date of shipment from our factory.

Caring for Princeton:

Wood Finish:

Leda finishes are resistant to most everyday hazards, however some precautions are necessary to maintain the beauty of your furniture

- regular dusting with a soft clean cloth, slightly moistened with water. Dry completely with a separate dry cloth, always rubbing with the grain pattern
- avoid contact with harsh solvents, ie. hot dishes, nail polish, alcohol and moisture.
- clean spills immediately
- use pads when displaying accessories and heated items on table and cabinet
- do not place furniture tops near heating outlets, windows or direct sunlight

Decorative Hardware:

- clean with a soft damp cloth
- avoid using harsh detergents or polish on the hardware

These practices will help your Leda Furniture maintain its beauty and elegance for years to come.

All furniture photographed are available to qualified Leda Furniture retailers. Possession of this catalog does not necessarily constitute authority to purchase, nor does the furnishing of this catalog constitute an offer by Leda to sell any or all of the items contained herein.

All photography, illustrations and specifications in this catalog represent the most current product information available at time of printing. All information, product design and product availability is subject to change without notice.



LEDA FURNITURE LTD.

350 Clayson Road, Toronto, Ontario, Canada. M9M 2H2

Tel: 416-745-9588 Fax: 416-745-1803

email: info@ledafurniture.com www.ledafurniture.com

This catalog is the property of Leda Furniture and is for the use of their authorized retailers.
Complete and/or partial reproduction without written consent from Leda Furniture management is prohibited.
Copyright MMVIII. Printed in Canada